



BWINDI COMMUNITY HOSPITAL

newsletter

Volume 5

Issue 1

February 2019

Care for the newborn boosted



Nurses Agatha and Donati, monitors a newborn in the infant warmer after being installed in neonatal unit.

Bwindi Community Hospital has received medical equipment for improving newborn healthcare. The donation comes at a right time when the hospital is overwhelmed with a big number of babies born prematurely or with diseases of the new born coming from the entire district with a population of 300,000 people.

This equipment has been acquired by the support of the Ludwig Family and Day One Health donations to this area. They include; infant warmers, phototherapy machines, fetoscopes, fetal heart detectors, a fetal monitor, and ambu bag kits, these will turn around the outcomes of neonatal care in this unit. In low resource countries and communities, such equipment has a great impact on patient management.

Our staff have received appropriate clinical and technical training courses on use of these items for improved neonatal health outcomes.

The phototherapy machine produces special light to treat yellowing of the body of the newborn that could potentially damage the brain if not handled well in time.

According to John Naturinda, the nurse in charge of pediatrics, a quarter of the admissions on this ward are neonates, the equipment will go a long way in saving lives of babies especially the ones who come in as prematures and with jaundice. Bwindi Community Hospital is very grateful to Ludwig Family and Day One Health for this donation as it contributes to our vision of becoming a specialist hospital by 2020.

Content

- Care for the newborn boosted - p1
- Mothers' waiting hostel expansion - p2
- BCH and UNSB recognised again - p2
- Health workers trained in management of mental illness - p3
- Uganda College of Health Sciences - Bwindi (UCHSB) to open July 2019 - p4

Our vision

A healthy and productive community free from preventable diseases and with excellent health services accessible to all.

Our mission

Serving Jesus Christ through giving holistic healthcare and life in all its fullness to the staff, patients, clients and visitors in the hospital and community.

Vision 2020

A regional centre of excellence offering specialist health services contributing new scientific knowledge through research and outstanding institution in health care training.

Get in touch with us:

PO Box 58, Kanungu, Uganda
bwindicommunityhospital@gmail.com
www.bwindihospital.com

+256 (0) 392 880 242
+256 (0) 703 342 891



BWINDI COMMUNITY HOSPITAL

Volume 5

Issue 1

February 2019

newsletter

Waiting mothers get more space



The Bwindi community waiting mothers' hostel has been expanded to meet the increasing demand of the number of pregnant women that wait from the hospital until they give birth. The expansion of the hostel will increase capacity from the current 28 to 40 beds thus increasing the number of mothers delivering from the hospital.

Currently, the average hospital based deliveries in the area have increased from 69% in 2013 to 94.8 % in 2018 compared to 70% nationally. As a result maternal and infant mortality rates in the area have reduced. Last year, the hostel was recognized by the social innovations in health, a Makerere University based research institution for providing an affordable

and sustainable solution towards improving facility based deliveries in the region.

Our heart felt thanks go to the Abercrombie and Kent Philanthropies for their generous support towards making a difference in Kanungu district especially to the mothers and infants at the Bwindi mothers' waiting hostel.

BCH and UNSB recognised again

Bwindi Community Hospital (BCH) and her sister institution Uganda Nursing School Bwindi (UNSB) have been awarded by Uganda Protestant Medical Bureau (UPMB) for being the best performing general hospital and nursing school of the year 2017/2018.

The two institutions were recognized during the annual Uganda Protestant

Medical Bureau symposium held at Kampala in December last year.

Over the years, the hospital has turned out to be a model facility in the region in areas of maternal and child health, community and mental health and championing the community health insurance initiative.





Health workers trained in management of mental illness



Health workers with their certificates after the training at Bwindi Community Hospital.

Health workers from health facilities neighboring Bwindi Community Hospital (BCH) in Kanungu district have been trained to enhance capacity for early detection and management of mental health problems in a Primary Health Care (PHC) network.

The week-long training at BCH was sponsored by Jamie's fund in January this year. A total of 45 health workers acquired knowledge, skills and better attitude towards supporting actual practice adjustment and integration of mental health into Primary Health Care.

Mental health disorders constitute the single largest burden of disease worldwide, making up approximately

14% of the global burden of illness. Four of the top five diseases accounting for the most life years lived with disability in persons aged 15-45 years are mental disorders (World Health Report, 2001). Yet, the treatment gap between those requiring care for mental health problems and those receiving it, is large: only 25% of patients in many low income countries gain access to treatment (WHO, 2008).

WHO developed the Mental Health Gap Action Programme Intervention Guide (mhGAP-IG), that equips Primary Health Care (PHC) providers to give proper diagnosis and first-line management of mental health problems. This is a tool for scaling up care for mental,

neurological and substance use disorders (MNS) and to improve access to care for mental health problems by integrating it into PHC.

Mr Yusuf Kuule, a community psychology graduate and the head of mental health programme at BCH, says mental health program has registered an increase in the number of patients from 121 in 2009 to 2,568 patients currently; 57 under alcohol use disorders, 516 with epilepsy and 1995 with mental health illnesses. However, medicines are scarce but also very expensive for those in need after patients have been assessed. This has led to poor compliance to medical guidance that stood at 19% by the end of December last year.



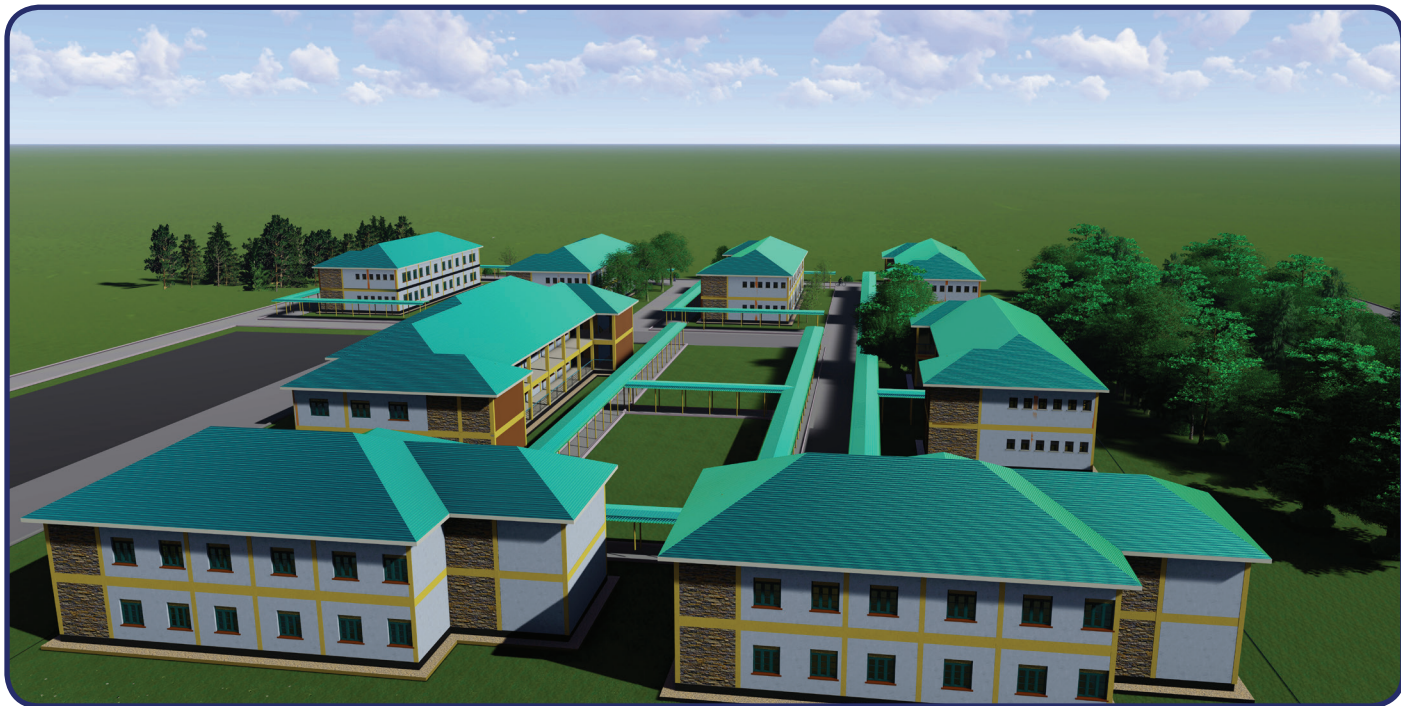
BWINDI COMMUNITY HOSPITAL

newsletter

Volume 5

Issue 1

February 2019



Artistic impression of the proposed UCHSB Campus.

Uganda College of Health Sciences - Bwindi (UCHSB) to open July 2019

Bwindi Community Hospital (BCH) is set to open another health training program in July this year at Nyamwegabira campus within Kihiihi Town Council. The Uganda College of Health Sciences - Bwindi (UCHSB) will start with training in Clinical Medicine and Community Health diploma program for future Medical

Clinical Officers.

This venture is in line with the strategy Diocese of Kinkiizi and the Uganda government of skilling Ugandans through accessible and affordable education. The Diocese of Kinkiizi has added 20 acres of land and two buildings to kick start this training. According to the executive director of

Bwindi Community Hospital, doctor Birungi Rwamatware this college will host other training programs in future including school of Public Health Dental Officers, and Medical Laboratory Technology.

The College of Health Sciences at Nyamwegabira will operate alongside Uganda Nursing School Bwindi - UCU affiliate (UNSB) which was established five years ago and has been exceedingly successful graduating top notch nurses and midwives. Plans are under way to upgrade UNSB to a university status come 2025.

You can support us by making a tax deductible donation through our charities;

The Kellermann Foundation, USA

P.O. Box 832809
Richardson, TX 75083-2809
www.kellermannfoundation.org

Health For All Uganda e.V., Germany

Takustr. 39e, 50825 Köln, Germany
www.health-for-all-uganda.com

Abercrombie & Kent Philanthropy, USA

www.akphilanthropy.org

Reach Bwindi, UK

www.reachbwindi.com

Please earmark the donations for use at Bwindi Community Hospital

Or make a direct transfer to our bank account in Uganda with these details:

Account name:
Bwindi Community Hospital
Bank: Stanbic
Branch: Kihiihi
Account number: 9030008175194
Sort code: 045360
Swift code: SBICUGKX